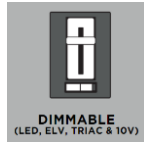
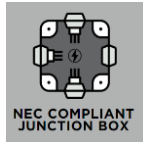
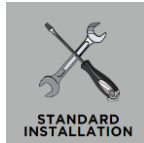
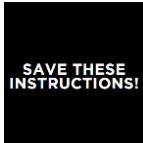


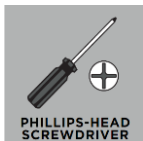
CAPA 18, 24 & 36 VANITIES

AKBA687; AKBA688; AKBA689

General Product Information



Suggested/Required Tools



Safety Information

CAUTION-RISK OF FIRE

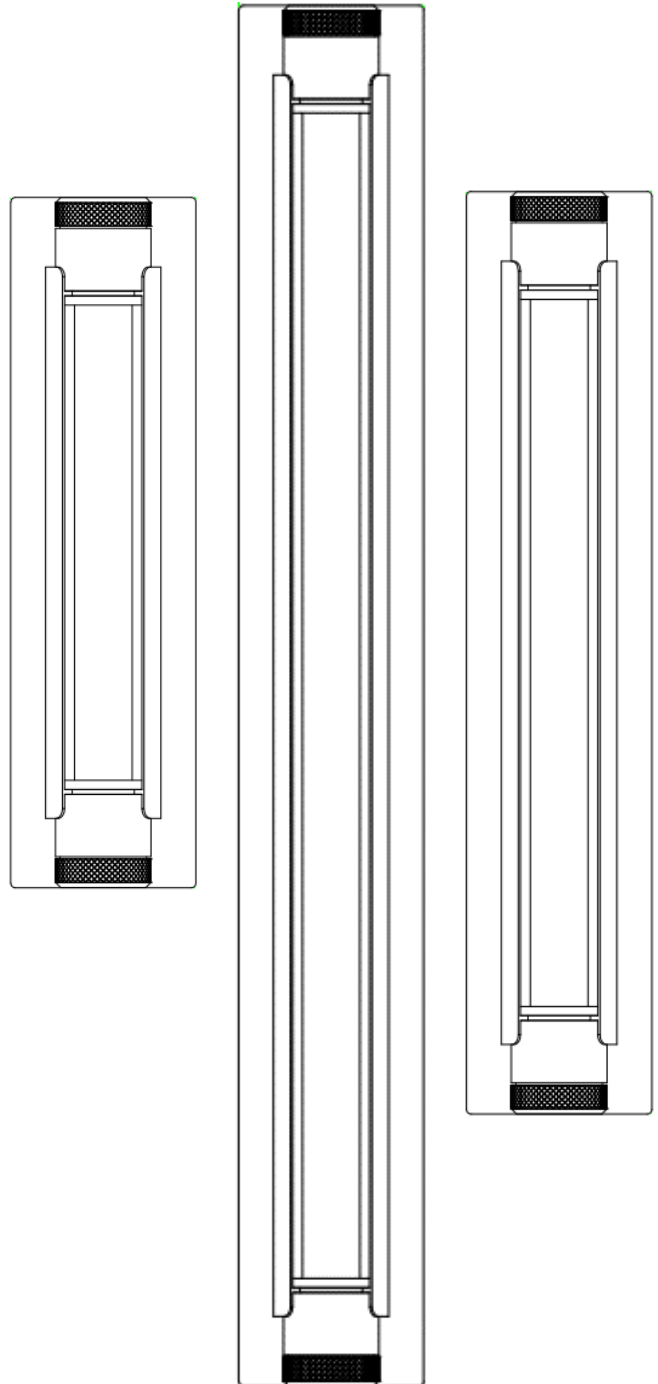
This product must be installed in accordance with the applicable installation code by a person familiar with the construction and operation of the product and the hazards involved.

USE MINIMUM 90°C SUPPLY CONDUCTORS.



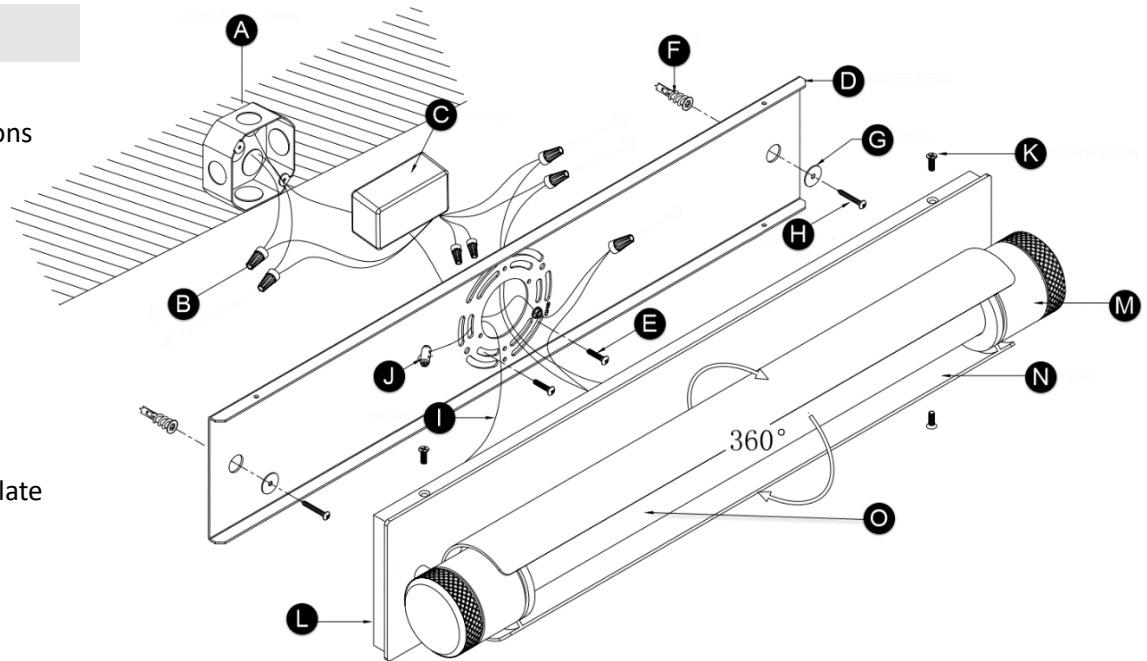
Turn off electrical current at the source before working with any lighting fixture or portable lamp.

Install and use this product in adherence with local electrical codes and regulations.



FIXTURE PARTS

- A. Junction box
- B. Wire Nut Connections
- C. Driver
- D. Mounting Plate
- E. #8-32 Screws
- F. Anchors
- G. Washers
- H. Anchor Screws
- I. Safety Cable
- J. Cable Grip
- K. Fixture Screws
- L. Fixture Base/Backplate
- M. Fixture
- N. Shade
- O. LED



INSTRUCTIONS

I. Preparing for Installation

1. Carefully, unbox and examine all the items included in the packaging of the fixture.
2. Separate the mounting plate from the fixture's backplate by removing the fixture screws on both sides of the fixture.
3. Use the mounting plate to trace and mark the locations for the anchors. Drill a hole at the marked locations to fit the anchors into.

II. Wiring the Fixture & Installing the Mounting Plate

1. Safety first! Locate the circuit breaker and switch it off to cut off the power supply to the relevant circuits to ensure there's no electricity running through the wiring.
2. Connect the LED driver input wires to the local power line wires. Twist the bare ends of the following pairs of wires together using a wire nut to secure a connection:
 - a) Neutral driver wire (white) to neutral power line wire
 - b) Hot driver wire (black) to hot power line wire
3. For 0-10V dimming capabilities, connect the purple and pink wires to a compatible dimmer. Cap off these wires, if not in use.
4. Place the driver in the junction box, ensuring the output driver wires are accessible.
5. Secure the mounting plate to the junction box using the #8-32 screws. Then slide the washers through the anchor screws and screw them into the anchors to secure the mounting plate directly to the wall behind the junction box.
6. Pull the safety cable up and down through the mounting plate, feed it through the cable grips, and secure it to the bracket by tightening the set screws.
7. In accordance with local electrical codes, connect the fixture ground wire (bare copper or silver wire) to suitable ground. This may be a green ground screw on the mounting plate, which the ground wire should be tightly wrapped around or a house wire (green or bare copper wire without insulation).
8. Now, twist the bare ends of the following pairs of wires together using a wire nut to secure a connection:
 - a) Negative (-/blue) fixture wire to negative (-) output driver wire
 - b) Positive (+/red) fixture wire to positive (+) output driver wire
9. Carefully tuck all the wires on the mounting plate.

III. Installing the Fixture

1. Place the fixture backplate/base onto the mounting plate and secure it in place with the fixture screws.
2. Adjust the fixture shade to preference (rotates 360°).